



TLF Connects

Empowering Educators, Elevating Student Success
Executive Coaching & Professional Learning

video series

TOGETHER WE LEARN



Together We Learn

A video series that highlights examples of Contributive Learning in education

Student Agency

 **THE Learner First™**

STUDENT AGENCY

In our first of a four part video series, TLF Founder, Joanne McEachen, and Executive Director, Maree Neilsen, chat with two dynamic leaders, of TLF partner schools: Anita Simpson (head of school, American International School in Kowloon Tong, Hong Kong) and Mackenzie Burns (deputy principal, Mitchelton State High School in Queensland, AUS).

“

By giving students an authentic role in shaping their learning environment, we create a culture where they feel truly invested. And when students feel valued, they thrive—not just academically, but as engaged members of the community.



Dan Neilsen, Head of Department
Toogoolawah State High School
Queensland, Australia



Get to know Deb Dunstone, CEO at The Learner First

. As CEO of The Learner First, Deb champions promoting inclusive practices and empowering educators to positively impact their communities.

“

It's about finding the space in the middle--the creative gap--where true innovation can flourish.

”



EMPOWER: A Case Study

A successful student at Brisbane South State Secondary College knows themselves and is a lifelong learner. They are connected, healthy, confident and self-directed global thinkers who are passionate about their desired futures.

This case study about BSSSC's Learner-Prener Program and the Empower Project is an exemplar of Student Agency.

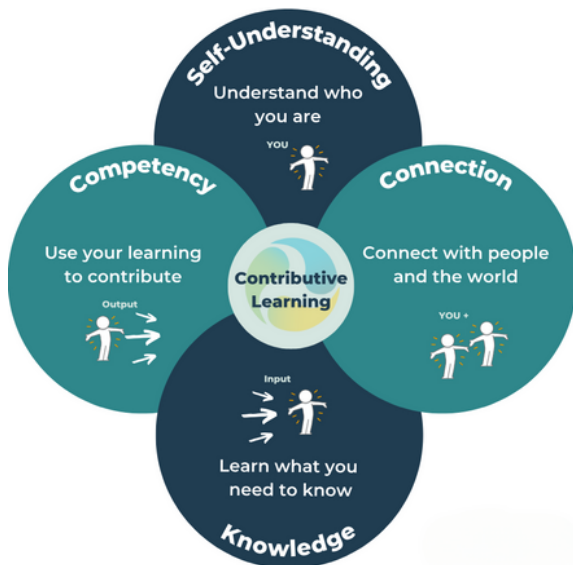


Tune into this episode of Education Champions - an inspiring talk show that shines a spotlight on educators and leaders who are making a difference in the world of education. In February, our Executive Director of Global Policy and Practice, Beth Hamilton, was a guest.

"Ultimately, education is about providing meaningful learning experiences that help students understand who they are, how they connect with others, and how they build their competencies and knowledge together."



Beth Hamilton
Executive Director of Global Policy & Practice
The Learner First



Embark on a journey to align teaching, learning and leadership to strengthen curricular outcomes, improve well-being for all, and empower school communities to achieve collective goals.



info@thelearnerfirst.com