



TLF Connects

Empowering Educators, Elevating Student Success
Executive Coaching & Professional Learning

Learning in Leadership

[A Principal's Reflection](#)



Timothy Barraud
Principal, Balmoral State High School

In this mid-year reflection, TLF Partner School Principal Timothy Barraud of Balmoral State High School (Brisbane, Queensland) shares key leadership lessons from his own journey, encouraging readers to reflect forward and embrace continued growth in their roles.

“Ultimately, my leadership continues to be guided by a simple but powerful purpose: to make a meaningful difference in the lives of learners, not only within our school, but across the broader educational landscape.”



The Gift of Mentoring: A Two Way Journey

CEO Deb Dunstone reflects on one of the most meaningful gifts of her career – the gift of mentoring.



“

There's something irreplaceable about having someone “in your tent.” That person who listens without judgment helps you test your thinking and gives you a gentle nudge when needed. Coaching and mentoring aren't exclusive to education; from athletes to astronauts, everyone at the top of their field has someone to push them, support them, and help them become their best selves.

”

Purpose-driven leadership, realized.

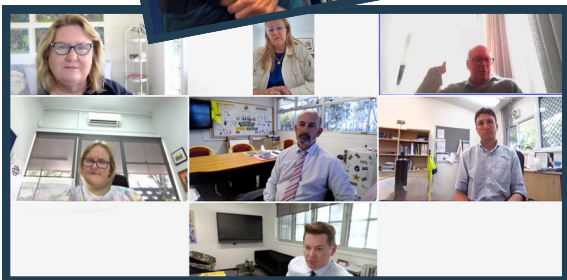
At The Learner First, our coaching empowers leaders to understand who they are, how they contribute, and how to create learning environments where people thrive.

Grounded in Contributive Learning™, our approach blends clarity, purpose, and evidence-based leadership strategies to transform teams, schools, and systems from the inside out.

Contact us today to learn more about our Executive Coaching.



Info@TheLearnerfirst.com



FOLLOW US



www.TheLearnerFirst.com

TLF is incredibly proud of our partnerships with inspiring educators around the world who make a positive difference every single day. Over the past three months, our TLF schools have been leading, learning, collaborating, and most importantly, having fun! Enjoy this snapshot of the wonderful experiences, achievements, and connections that continue to bring our global community to life.



April

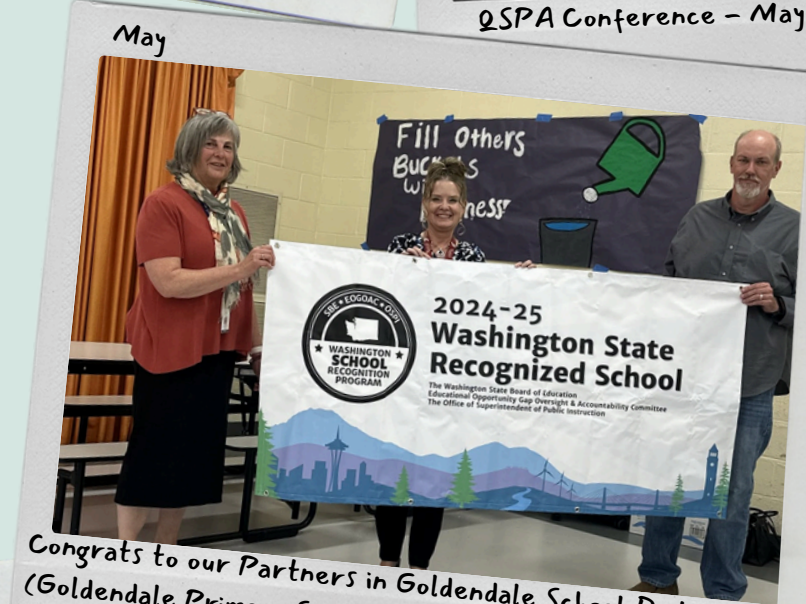
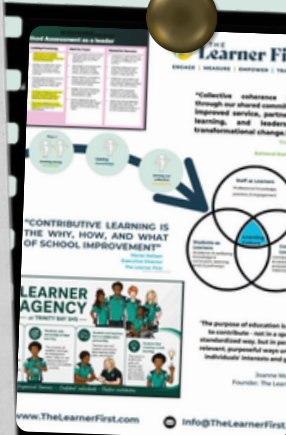
Leaders Learning First
Christchurch, New Zealand



Brisbane, Queensland, Australia

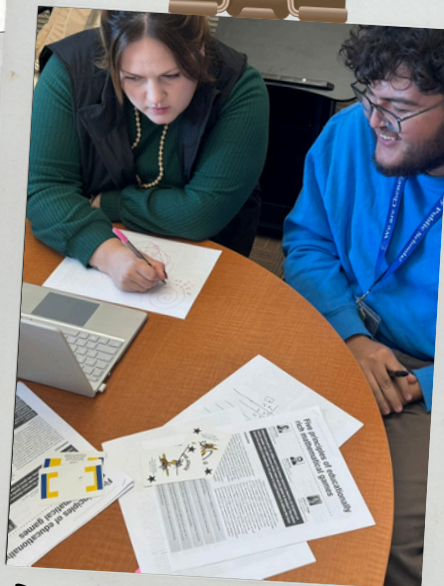
April

QSPA Conference - May



May

Congrats to our Partners in Goldendale School District
(Goldendale Primary School!)
Goldendale, Washington, USA



Designing Learning Workshop
Cheney, Washington, USA



New Zealand TLF Maths
Workshop
April



QSPA Conference - May

Brisbane, Queensland, Australia





Holding the Skies: The Quiet Leadership of School Principals



In honor of National School Principal Day on May 1 in the United States, Executive Director Beth Hamilton shared an analogy to celebrate not just the title of principal, but the responsibility behind it.



Lead with Purpose. Empower with Vision. Transform with Contribution.

Where purpose-driven leaders build coherence, amplify student voice, and foster thriving learning communities.



 **THE
Learner First™**

ENGAGE | MEASURE | EMPOWER | TRANSFORM

Reach Out Today
to Learn More!



www.TheLearnerFirst.com



info@thelearnerfirst.com



Introducing **TECH TEMPEST**

Where Ancient Wisdom Meets AI



Tech Tempest™ by SHIFT127

Tech Tempest is a full-day competitive simulation where teams represent ancient civilisations competing to win a modern technology contract. Hudson Hanseatic Bank is building a digital bank from scratch and eight teams are pitching to deliver it.

Players don't study AI transformation. They live it — making real decisions about what to build, where to build it, how fast to scale, and what to sacrifice. They use AI tools to solve problems, defend their strategy to a simulated risk committee, and discover that there are no right answers — only trade-offs and consequences.

Making the Important Measurable

To truly measure learning, we must measure belonging, trust, and contribution with the same rigor as reading, writing, and numeracy.

When learning thrives, relationships strengthen—and achievement follows.

We would love to partner with you!

- Executive Coaching
- Professional Learning
- Global Evidence-Based Tools & Resources

**Together, we'll
make what
matters most
measurable and
achievable.**



info@thelearnerfirst.com

 **THE
Learner First™**